

Sneak-Peek of February SJNCERT Presentation by Walnut Creek CERT

QRZ Jumpstart Program

January 4th, 2023

Walter Chang, AG6FK, WRPD854

Almaden Radio Club

Santa Clara County ARES/RACES

San Jose & Almaden Valley CERT, District 10

Almaden Valley Public Safety Net



SJNCERT Feb. 1 Walnut Creek CERT Presentation



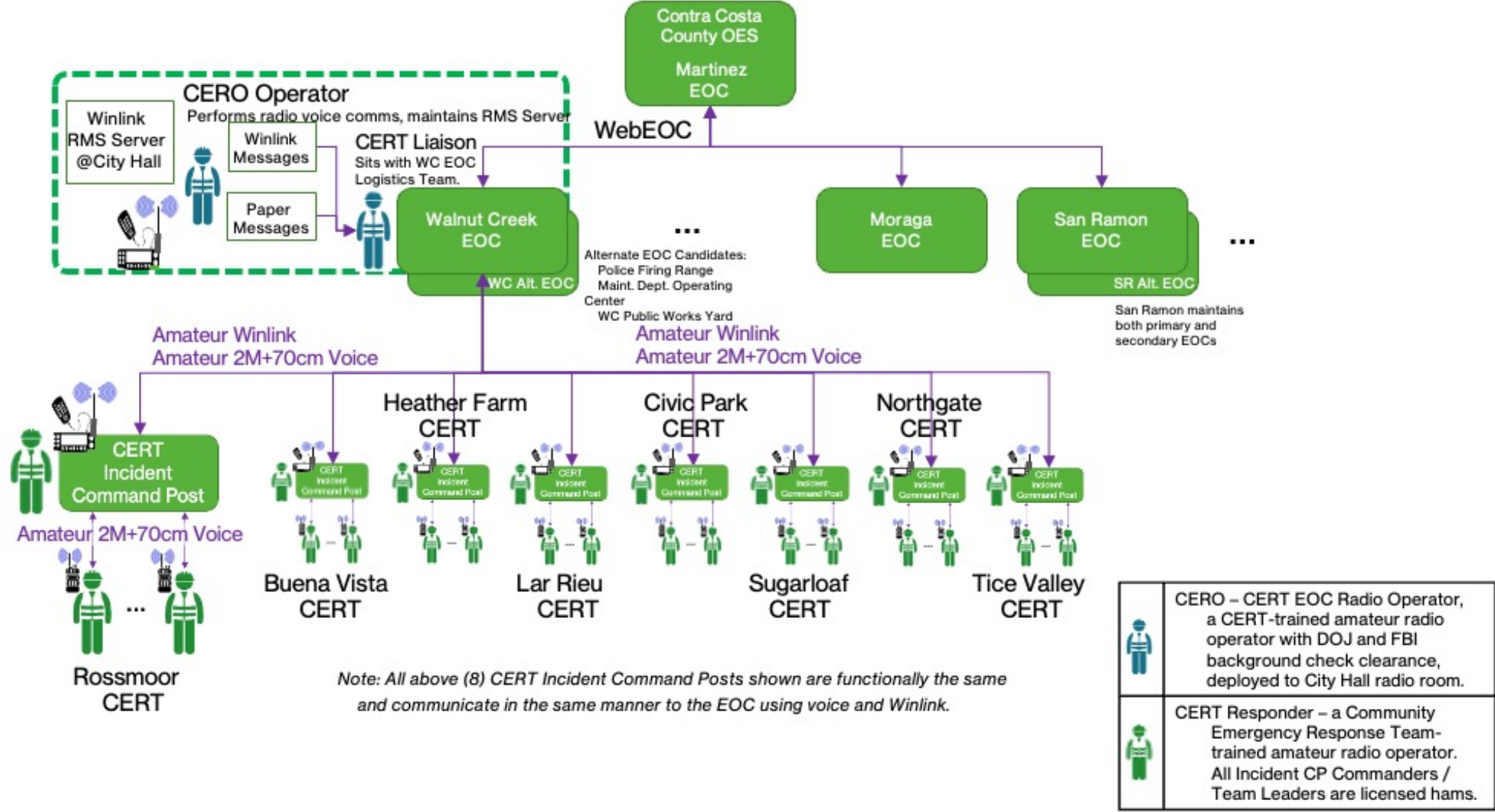
John Trinterud K9ONR
Walnut Creek CERT
East Bay ARRL Specialist



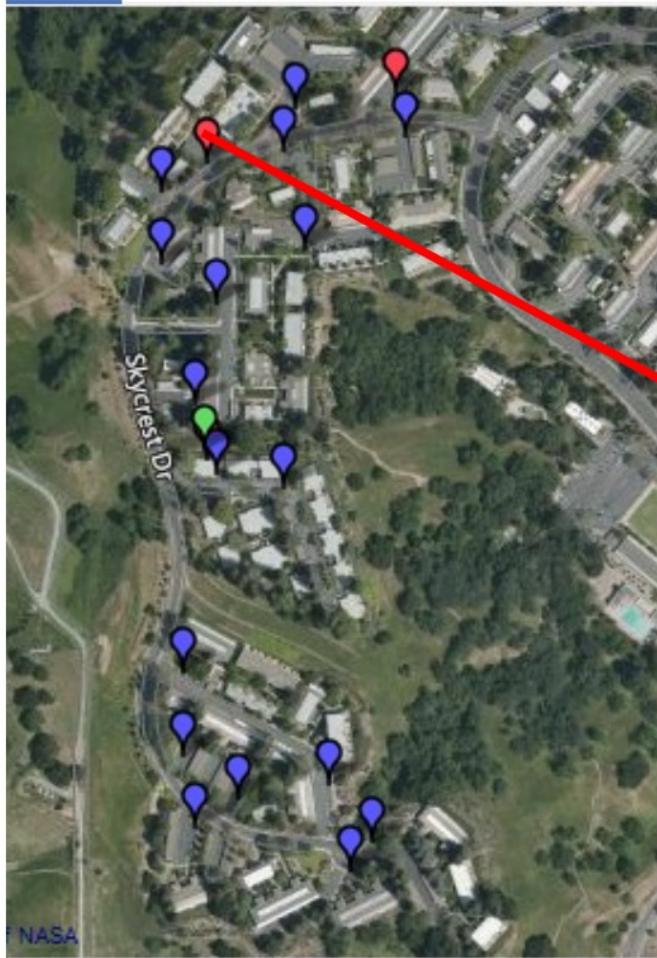
Don Prosnitz N6PRZ
Walnut Creek CERT
SHAMS President

- John will describe the **process and work done** to develop the emergency communications **infrastructure for Walnut Creek CERT** neighborhoods
 - How their CERT are organized
 - How CERT groups interact with City Hall and EOC
- Don Prosnitz will describe his **role as CERT Liaison** & coordinating communications between CERT Incident Command Posts (CPs) and city officials at their EOC.
- John will give a brief demo of the additional capabilities of:
 - **GPS-enabled communications for CERT** field surveys,
 - Bulk GIS email transfers and mapping done in CERT Command Posts
 - How resulting positional extracts from CERT CPs are used in their QGIS.

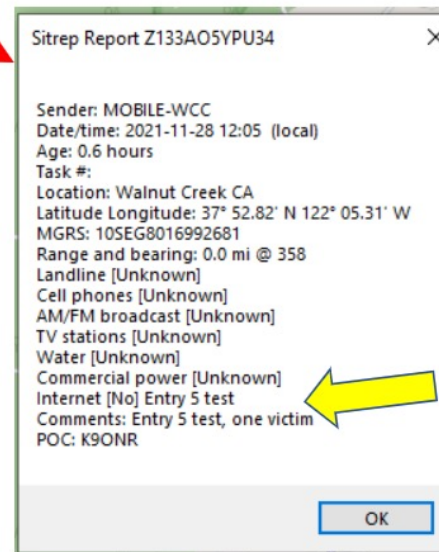
SJNCERT Feb. 1 Walnut Creek CERT Presentation



SJNCERT Feb. 1 Walnut Creek CERT Presentation



Rossmoor – Skycrest Drive
I surveyed 18 entries in 30 minutes;
stored 1 Spotrep (older form) email
from each entry with my Woad GPS
running. Entries with mock issues
have red pins; click pins for details.
(Map is cached, does not need the
Internet once downloaded)



The newer Field
Situation Report has FAR
more selectable criteria

SJNCERT Feb. 1 Walnut Creek CERT Presentation

Set up map filtering by template criteria

Map Filters for SPOTREP-2

Age and Date Limits on Reports

- Do not limit reports by age or date
- Only display reports more recent than this many hours:
- Limit to this date range:
 - Limit start date/time: (Local time)
 - Limit end date/time: (Local time)

Filter Map by Field Values

Stored Filter Sets

Filter set: POC is Provo

Enable map filtering Include text fields such as comments as filter items (filter with one or more words or phrases separated by commas)

Select reports that match ANY enabled filter item Select reports matching ALL enabled filter items

Form field	*	Selection Value	Marker Color
AM/FM Broadcast Stations functioning?	=	(Ignore)	Black
Cell Phones functioning?	=	(Ignore)	Brown
Commercial Power functioning?	=	NO	Gray
Internet functioning?	=	(Ignore)	Green
LandLines functioning?	=	(Ignore)	Orange
Precedence	=	(Ignore)	Red
Public Water Works functioning?	=	(Ignore)	Purple
Range (mi)	=		(default)
Sender	=	(Ignore)	(default)

Clear all selections

Which markers to show on map

- Display all markers using colors to indicate selections
- Display only markers selected by filters

Blue (Default color for unselected markers)
White (Color if multiple colors are selected)
Green (Color of your location marker (QTH))

QRZ New Ham Jumpstart Program

Free Dual-Band Handheld Transceiver, Programming Cable & Software!



**RPS-QRZ1
PROGRAMMING SOFTWARE
FOR THE EXPLORER QRZ-1**



- Transmit: 144 to 148 MHz & 420 to 450 MHz
- Receive: 65 to 108 MHz (FM Radio) 136 to 174 MHz & 400 to 480 MHz
- Power: 5 Watts
- Memory: 200 Channels
- Battery: 1400 mAh Li-ion, 7.4 VDC
- Weight: 3.7 ounces
- Antenna Jack "SMA-F" on Radio
- Dimension: 6.3" x 2.9" x 1.4"
- Programming cable
- RT Systems QRZ1 radio programming software (Windows or MacOS)

- <https://www.gigaparts.com/qrzjumpstart>

QRZ New Ham Jumpstart Program!

- This program is for US-licensed Amateur radio operators.
- Applicants must have an active QRZ.com User Account. (FREE)
- **Applications must be submitted within 6 months of the license issuance date.**
- Applicants need to provide a government-issued photo ID. Information is not shared.
- Once application is approved, applicant has 90 days to use their Gigaparts.com coupon.
- New Ham Welcome Packages will be shipped by Gigaparts.
- Only one New Ham Jumpstart Package per operator will be issued.
- The contents of the New Ham Jumpstart Package are subject to change at any time.
- **New Ham Jumpstart Packages available while supplies last or until March 31, 2023.**
- Additional shipping charges may apply when shipped outside of the contiguous 48 states.

Signup: <https://www.qrz.com/jumpstart>

Terms: <https://www.qrz.com/jumpstart/terms>